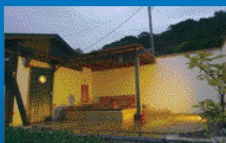


## Hillside Inn Sirocco

MAP P49 C-4

☎ 0470-28-2341



Rooms are ocean-view and sunset-view. Serving fresh local seafood, vegetables, and stake, especially the lobster is recommended. Open-air reserved bath with soft water is also available

### DATA

- ① 1416-17 Inuishi, Tateyama City
- ② From 10,500 yen
- ③ 12                      ④ 24
- ⑤ <http://www.sirocco-inn.jp>

## Country House Hotel LA TIPASA

MAP P49 C-4

☎ 0470-28-2388



Mediterranean Sea styled small hotel with a swimming pool and a tennis court. Four types of room are available. Have a breakfast at the terrace on sunny morning. Not available for children under middle school.

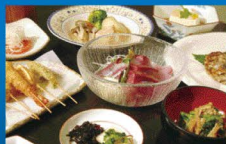
### DATA

- ① 1404-1 Inuishi, Tateyama City
- ② B&B from 6,250 yen to 8,900 yen
- ③ 9                              ④ 22
- ⑤ <http://homepage2.nifty.com/tipasa/index>

## Refresh Inn Tomorrow

MAP P49 C-4

☎ 0470-28-1715



You will be able to refresh here. Providing Japanese styled dinner which is well balanced and full breakfast which starts from a soup. For bath, Tomorrow uses soft water which makes your skin smooth.

### DATA

- ① 1404-30 Inuishi, Tateyama City
- ② From 10,500 yen
- ③ 12                              ④ 25
- ⑤ <http://www.281715.com>

## Zen's Furusato Labo

MAP P49 D-4

☎ 080-5033-5487



Why don't you experience country life? This is the facility you can experience "Kamado (cooking stove)", "Irori (fire place)", and "Goemon buro (a type of bath)".

### DATA

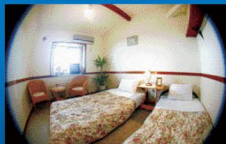
- ① 251-1 Inuishi, Tateyama City
- ② From 20,000 yen (1group)
- ③ 1                                      ④ 6
- ⑤ <http://furusatolabo.jp>

## Pension La Terrace Tateyama

MAP P49 C-4

ペット相談可

☎ 0470-28-2441



Providing free light breakfast. If you request for dinner, it will be BBQ. (If the weather is bad, BBQ will be indoor.) Pets can stay together for one group per night.

### DATA

- ① 788-76 Sunomiya, Tateyama City
- ② B&B from 5,775 yen
- ③ 11                                      ④ 32
- ⑤ <http://www.catchball.jp/la-terrace>

## Tateyama Sunset Youth Hostel

MAP P49 C-3

☎ 0470-28-3210



Established B&B styled lodge in May 2010. It was used to be a small hotel, but it renovated as a youth hostel. The rate is 4,200 yen all year round. Enjoy an artificial hot spring and quiet atmosphere here.

### DATA

- ① 513 Sunomia, Tateyama City
- ② 1 Night No meal, from 3,600 yen
- ③ 7                                      ④ 18
- ⑤ <http://www.tateyama-sunset.com>